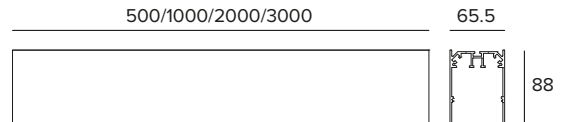
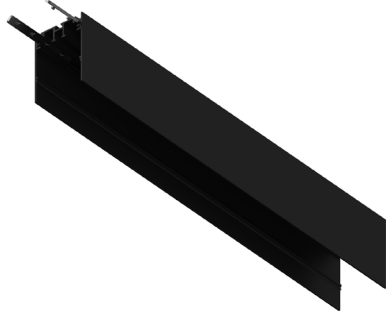


1E4154 | IVY Profile

Surface installation profile for ceiling/wall mounting needed for the installation of the lighting modules



The figures on the drawing are expressed in mm.

MECHANICAL CHARACTERISTICS

Extruded aluminum profile protected with a layer of black anodization with a minimum thickness of 15 μ .

Colour and finish: Black anodized

Dimensions: L=3000mm

Weight: 6Kg

Version: SURFACE

NOTES

Linear connection joint already included in the packaging. Extruded plastic aesthetic cover available as accessory.

WARRANTY

5 years.

WARNING

Luminaire designed for disposal/recycling at end-of-life.

Due to the technological evolution of the electronic components, the data provided may be updated, and as such, confirmation must be requested during the order process.

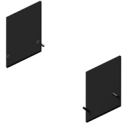
Luminous flux and power supply have +/-10% tolerances with respect to the indicated value. tq +25°C (CIE 121).

We reserve the right to make technical changes.

Targetti Sankey S.r.l.
Via Pratese, 164
50145 Firenze - Italy
Tel: +39 055 37911
targetti.com
targetti@targetti.com

CCIAA Firenze
Share Capital:
€ 500.000,00
VAT N. (IT):
01537660480
R.E.A: FI-275656

TARGETTI

1E4154 | IVY Profile**Surface installation profile for ceiling/wall mounting needed for the installation of the lighting modules****Related codes****End Caps**

Colour	Code
●	1E4167

End caps made of 2 pieces.
For surface mounted installation profile.

Accessories**Mechanical connector**

Colour	Code
●	1E4172

L shaped joint planar.
For surface mounted installation profile.



Colour	Code
●	1E4173

L shaped joint concave.
For surface mounted installation profile.



Colour	Code
●	1E4174

L shaped joint convex.
For surface mounted installation profile.

Cover Panel

L mm	Colour	Code
2000	●	1E4170

Extruded plastic cover.

Suspension

L mm	Colour	Code
2000	●	2T0049

Suspension cable.
For indoor environment only.

Due to the technological evolution of the electronic components, the data provided may be updated, and as such, confirmation must be requested during the order process.

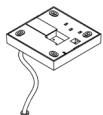
Luminous flux and power supply have +/-10% tolerances with respect to the indicated value. tq +25°C (CIE 121).

We reserve the right to make technical changes.

Targetti Sankey S.r.l.
Via Pratese, 164
50145 Firenze - Italy
Tel: +39 055 37911
targetti.com
targetti@targetti.com

CCIAA Firenze
Share Capital:
€ 500.000,00
VAT N. (IT):
01537660480
R.E.A: FI-275656

TARGETTI

1E4154 | IVY Profile**Surface installation profile for ceiling/wall mounting needed for the installation of the lighting modules****Power Supply Kit**

L mm	Driver	Colour	Code
4000	ON-OFF	●	1T5906EL

Suspension installation kit: power cable complete with a painted polycarbonate rosette.

Max 0.6kW.

Due to the technological evolution of the electronic components, the data provided may be updated, and as such, confirmation must be requested during the order process.

Luminous flux and power supply have +/-10% tolerances with respect to the indicated value. tq +25°C (CIE 121).

We reserve the right to make technical changes.

Targetti Sankey S.r.l.
Via Pratese, 164
50145 Firenze - Italy
Tel: +39 055 37911
targetti.com
targetti@targetti.com

CCIAA Firenze
Share Capital:
€ 500.000,00
VAT N. (IT):
01537660480
R.E.A: FI-275656

TARGETTI